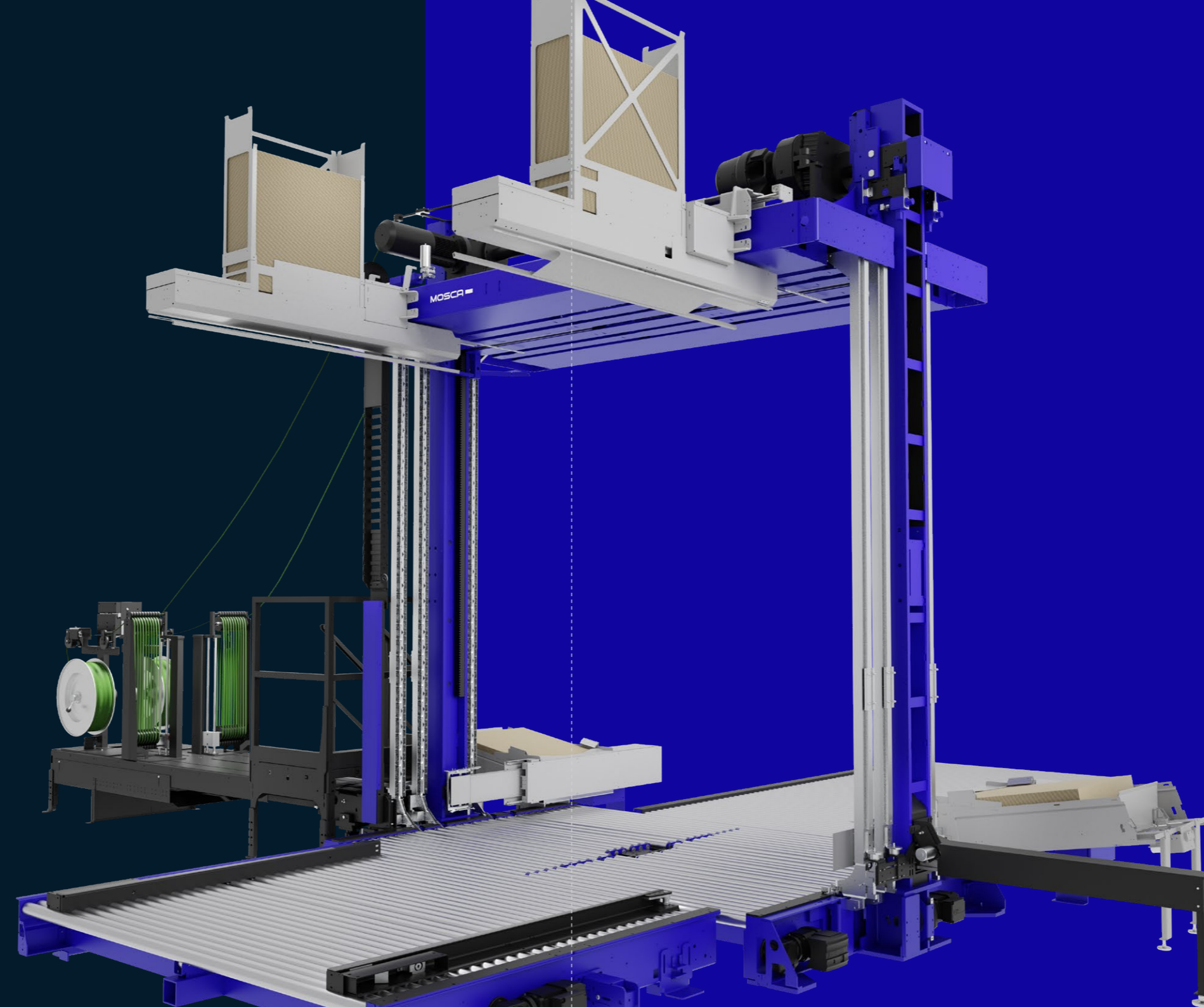


PALLET PACKING PRESS

REVOLUTIONIZE YOUR
END-OF-LINE [PACKAGING]
PERFORMANCE

MOSCA

EN



NONSTOP RESPONSIBLE
NONSTOP RELIABLE
NONSTOP INTELLIGENT
NONSTOP PROGRESSIVE

Fully Automatic Pallet Packing Press



Newspapers & Print Media,
Mail Order & Logistics, Food & Beverage,
Corrugated Cardboard & Paper



SoniXs Sealing Unit | Top mounted



Energy-efficient electrical drives



For PET straps



Compression of 30,000 or 50,000 N



Edge protection (option)



NONSTOP PERFORMANCE

PALLET PACKING PRESS

FULLY AUTOMATIC PALLET PACKING PRESS FOR SECURING TRANSPORT GOODS

Pallet packing presses are designed to strap a wide variety of palletised goods - from print media, to food or corrugated cardboard. The machines apply 30,000/50,000 N of force to compress packages before the strapping cycle thus preventing the strap from loosening during transport. Two to four strap lances ensure optimum load security and maximum productivity. The top-mounted, weight-reduced SoniXs sealing unit (32 kg) is secured by quick-release fasteners and can be easily removed for maintenance.

For more demanding applications, the pallet packing press is also available with high-speed drive systems. This increases compression force to 33,000/55,000 N and enhances cycle performance. Two independent braking systems ensure maximum safety.

TECHNICAL DATA

Performance:
Up to 220 pallets / h. without edge protection*
Up to 185 pallets / h. with top and bottom edge protection*
*with high-speed package, double vertically strapped, transport 24m/min (depending on product size)

Passage widths in mm:
1,800 - 3,200 mm (in 200 mm steps)

Conveying Height:
Min. 300 mm
[min. 350 mm at K_T]

Straps:
Standard machine grade PET straps
Width: SoniXs: 9.5 - 12.5 mm
KSR-2: 9.5 - 15.5 mm
Thickness: SoniXs: 0.54 - 0.66 mm
KSR-2: 0.54 - 0.89 mm

Strap tension: 200 - 2,500 N infinitely adjustable

Strap Guide Distance:
2 strap guides: 440 mm or 625 mm

3 strap guides: 440 mm and 625 mm

4 strap guides: 440 mm and 810 mm centered,
625 mm asymmetrical
(185 mm possible),
440 and 625 centered

Strap Coil Dispenser:
Core diameter: 406 mm

Electricity:
Voltage: 400 V, 50 Hz, 3L+N+PE
(others on request)
Power consumption: approx. 23,5 KVA (KCK-131),
depending on equipment

Weight: (without options)
approx. 5,000 kg

STANDARD FEATURES

Top-mounted SoniXs ultrasonic sealing unit

Up to four strap lances for palletised products

Strap guide distance of 440, 625 and 810 mm

1-2 sealing units laterally moveable

Siemens PLC control with touch panel

Can be integrated into most production line

Potential-free contacts to upstream and downstream machines

Strapping with medium compression
(up to 30,000 N - version KC_)

Strapping with high compression
(up to 50,000 N - version KP_)

Different Models:
K_R, Basic Model | Driven roller conveyor

K_K, Version | Driven roller conveyor with lift turncross

K_Z, Version | Driven roller conveyor with centering device

K_A, Version | Driven roller conveyor with lift turncross and centering device

K_T, Version | Driven roller conveyor with turntable

K_S, Version | Driven roller conveyor with turntable, laterally moveable

OPTIONS

Three-part signal light including low strap detection

Underfeed channels (except K_A and K_Z)

Automatic, electric edge protector feed, top and bottom

Pallet length scanning

High-speed drive
(compression up to 33,000 N or 55,000 N)

High-speed package for higher strapping performance

Strap sealing unit BSG 4

Safety guards

Air conditioning equipment

Data interface

Operating unit with 12" touch panel

Configurable strapping programs

Permanent lubrication bearings/sprocket

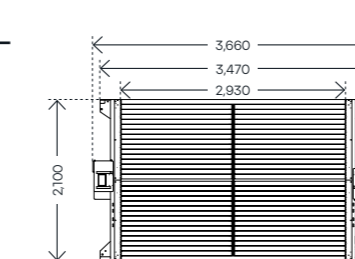
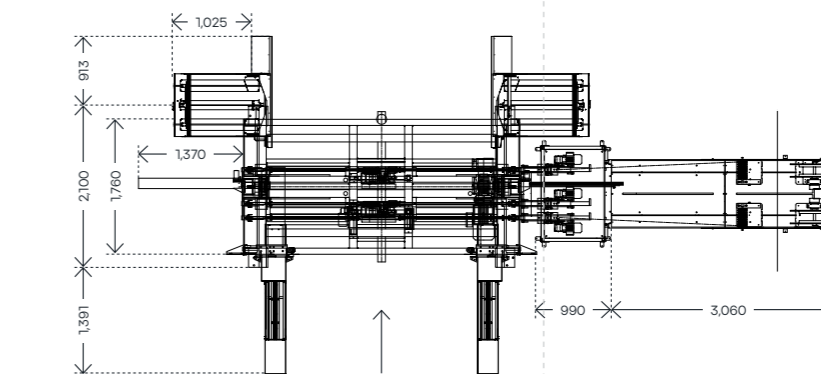
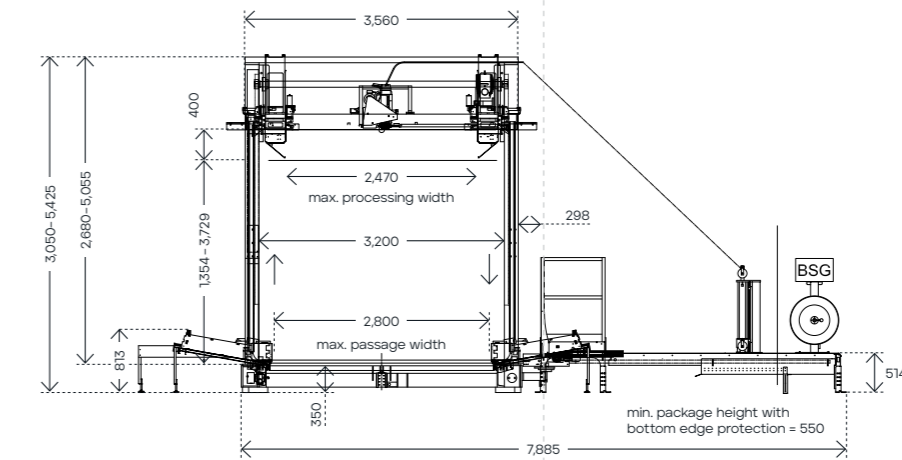
CONTACT US FOR A PERFORMANCE CONSULTATION!

mosca.com

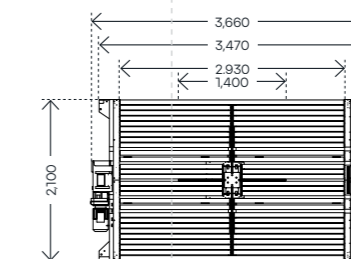
Mosca GmbH
Gerd-Mosca-Straße 1 · 69429 Waldbrunn

info@mosca.com · +49 6274 / 932-0

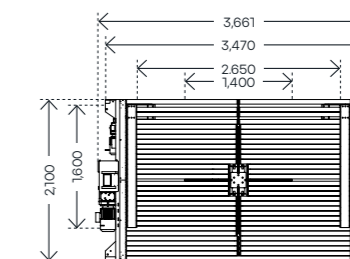
DIMENSIONS / WORKING WIDTH MACHINE (in mm)



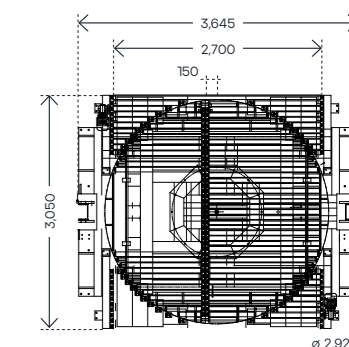
K_R Driven roller conveyor



K_K Driven roller conveyor
with lift turncross



K_A Driven roller conveyor with lift
turncross and centering device
K_Z Driven roller conveyor with
centering device



K_T Turntable with driven
roller conveyor

