

Display handling 1/4 Chep pallets



- [01] Hand strapping tool
- [02] Automatic
- [03] Fully Automatic
- [04] Complete line
- [05] Automation by Pinger
- [05] PackPart – Merchandise
- [06] TechCenter

HUG

Hand strapping tool



GENERAL INFORMATION

Cycle time: about 1 pallet/min

Space requirement: approx. 1m²

The strapping is manually placed around the package by the operator. Strapping is also carried out manually using a handheld device.

Link to the product: [HUG](#)



Sonixs MS-6 Automatic



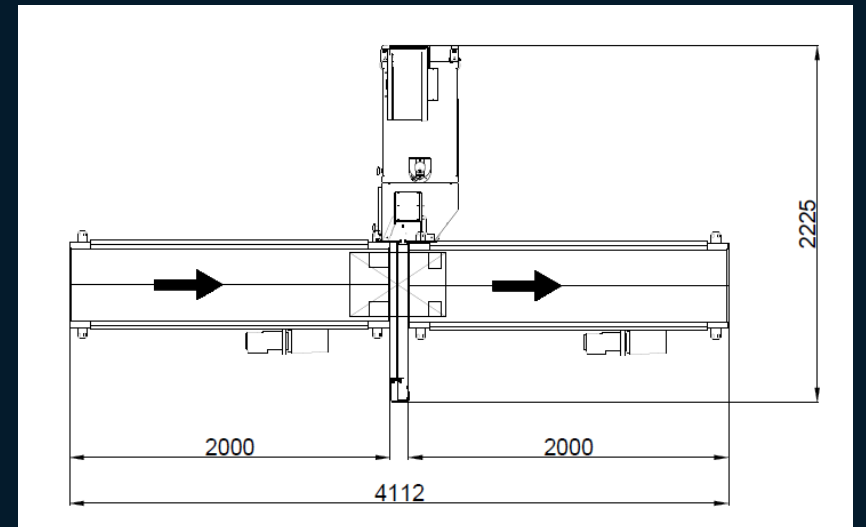
GENERAL INFORMATION

Cycle time: approx. 5 pallets/min, 2 straps per pallet

Space requirement: approx. 2.5m x 4.5m

Operators place 1/4 Chep pallets on the gravity roller conveyor and manually position the product in the Sonixs MS-6. By means of a flexible foot switch, the strapping can be triggered. Removal is also carried out manually by the operator.

Link to the product: [SoniXs MS-6](#)



Complete line



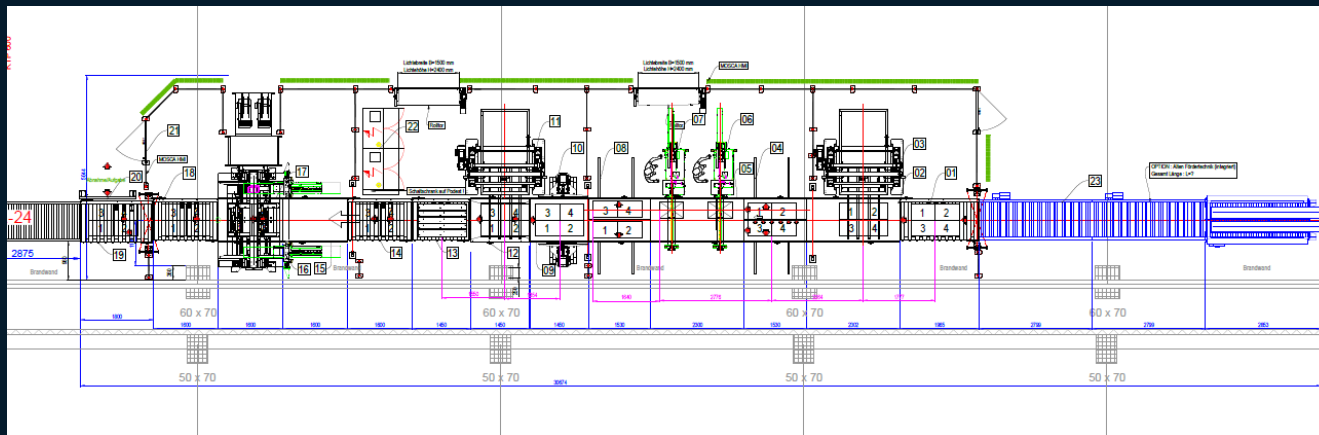
GENERAL INFORMATION

Cycle time: 140 1/4Chep pallets/h
35 Euro pallets/h

Space requirement: approx. 5m x 30m

Operators load the displays on Euro pallets including slip-on lids and edge protection clips. The Euro pallets are then fed into the line using an industrial truck. This takes over the depalletizing including individual strapping of the 1/4 Chep pallets including subsequent palletizing and pallet strapping including edge protection fully automatically.

[Link to the video: Together to success: How Mosca and Offergeld are revolutionising display logistics](#)



Complete line Movitec

GENERAL INFORMATION

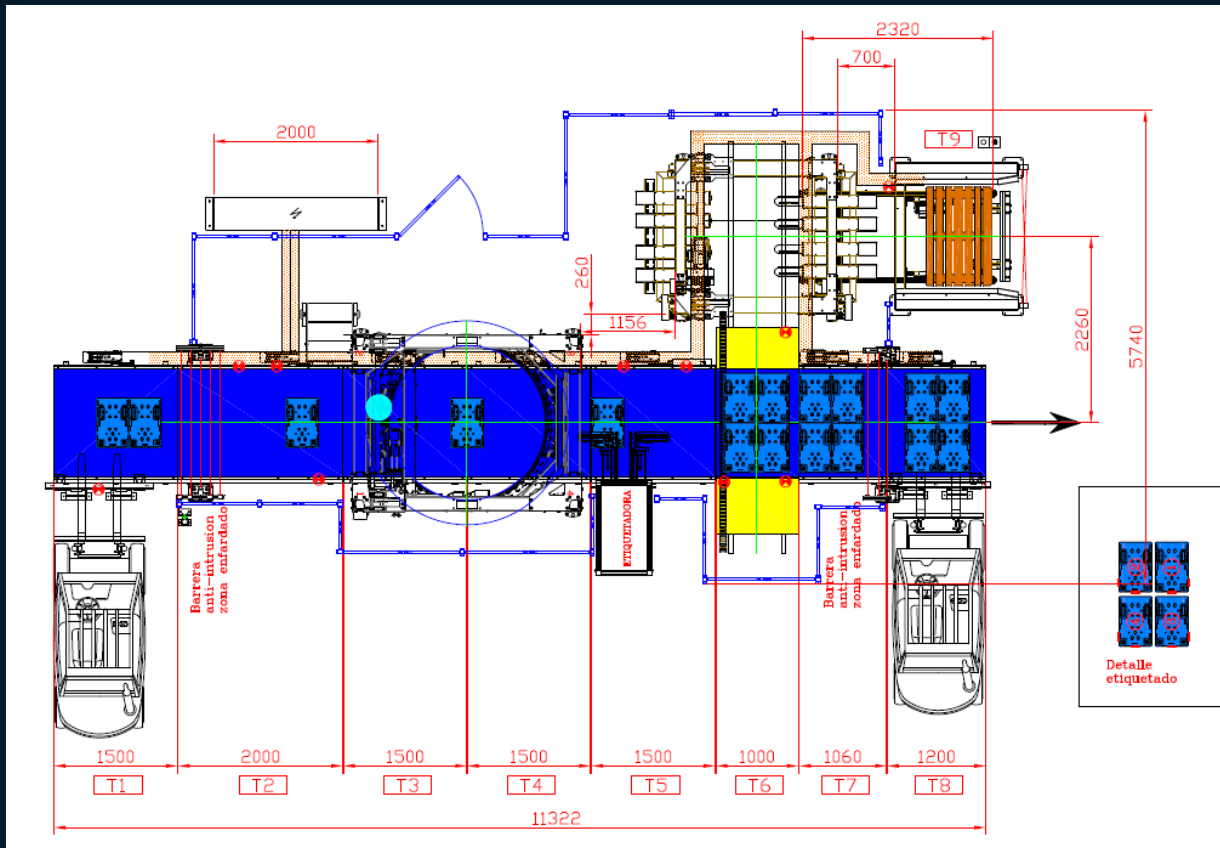
Cycle time: 52 1/4 Chep pallets/h
13 Euro pallets/h

Space requirement: approx. 6m x 12m

By means of industrial trucks, individual or grouped 1/4 Chep pallets are mounted and can then be wrapped individually or as a group. Downstream, it is possible to apply a label, group the individual pallets and dispense a Euro pallet under the grouped 1/4 Chep pallets. It is also possible to check in and wrap the complete Euro pallet including grouped 1/4 Chep pallets using industrial trucks.

Link to the product: [Saturn S6](#)

Link to the video: [Complete line Movitec](#)



Automation by Pinger Robotics



AI GENERATED

GENERAL INFORMATION

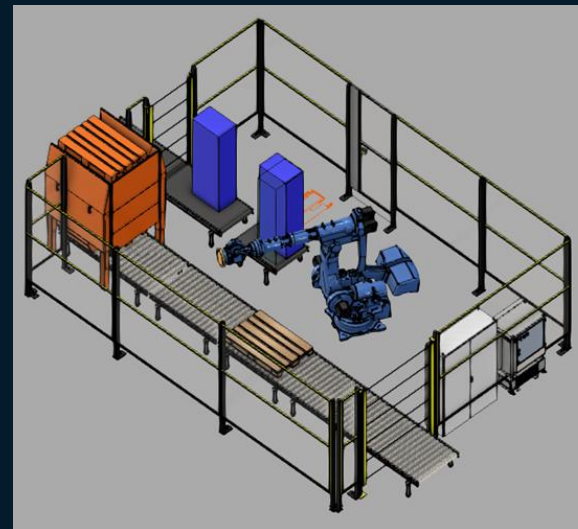
Pinger Robotic GmbH – 56751 Polch

Employees: 5

Palletizing, depalletizing, plant loading

Individual customer-specific automations

References: Automotive, Food & Beverage Industry



Link zur Homepage:
[Robotersysteme Automation](#)
[| Pinger Robotic GmbH](#)



PackPart – Product portfolio



01. STRETCH WRAPPERS



02. CASE SEALERS & ERECTORS



TURNTABLE WRAPPER

- ✓ Semi-automatic pallet wrapper
- ✓ Compact design
- ✓ Easy to operate



MOBILE WRAPPER

- ✓ Robotic pallet wrapper
- ✓ Flexible usage
- ✓ Suitable for bulky loads



ROTARY ARM WRAPPER

- ✓ Semi-automatic pallet wrapper
- ✓ Pallet remains static
- ✓ Suitable for heavy pallets



RING WRAPPER

- ✓ Fully automatic pallet wrapper
- ✓ Suitable for high volumes
- ✓ Designed for automated lines



CASE SEALER

- ✓ Semi-automatic case sealer
- ✓ Adjustable case sizes
- ✓ Robust construction



CASE SEALER

- ✓ Semi-automatic case sealer
- ✓ Adjustable case sizes
- ✓ For wet adhesive tape



CASE SEALER

- ✓ Automatic Strapping Machine
- ✓ Ideal for large volumes
- ✓ Automatic size adjustment



CASE ERECTOR

- ✓ Automatic case erector
- ✓ Fast and precise forming
- ✓ Ideal for high volumes

04. FILLING & CUSHIONING MACHINES



PAPER CUSHIONING SYSTEMS

- ✓ Environmentally friendly cushioning
- ✓ Reduced material consumption
- ✓ Ideal for fragile products



PAPER FILLING SYSTEMS

- ✓ Fast and efficient filling
- ✓ Compact design
- ✓ Helps reduce plastic waste



PAPER FILLING SYSTEMS

- ✓ Table mounting for flexible application
- ✓ Compact design
- ✓ Helps reduce plastic waste



AIR CUSHIONING SYSTEMS

- ✓ Protection for sensitive products
- ✓ Inflatable cushioning bags
- ✓ Fast and easy application

09. ADHESIVE TAPE



PP TAPE



PVC TAPE



PAPER TAPE



MACHINE TAPE



WET ADHESIVE TAPE

10. MISCELLANEOUS



BIG BAGS



SACKS & POUCHES



EDGE PROTECTION



ANTI-SLIP PAPER



CANS, BOTTLES & JARS

Link to the homepage:
[Packpart](https://www.packpart.eu)

PackPart GmbH
Gartenstraße 1
69429 Waldbrunn
Tel: +49 6274 932 3980
E-Mail: sales@packpart.eu
Web: www.packpart.eu

TECH CENTER

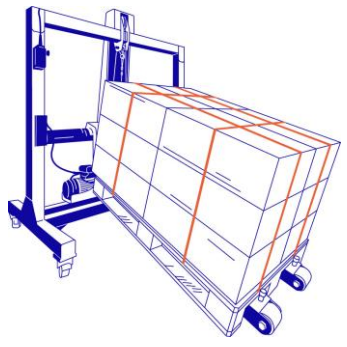
ANALYZE, TEST
AND OPTIMIZE YOUR
LOADING UNITS

MOSCA®



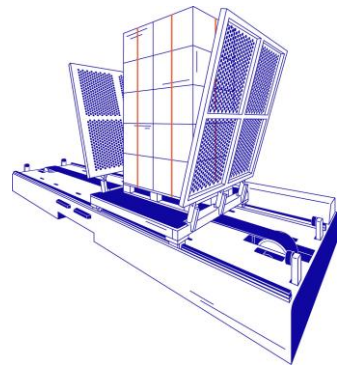
1

TILT TESTING TOOL
FOR INCLINATION TESTS



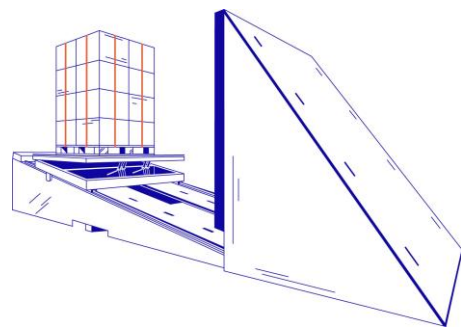
2

HORIZONTAL STABILITY TESTER
FOR ACCELERATIONS OR DECELERATIONS



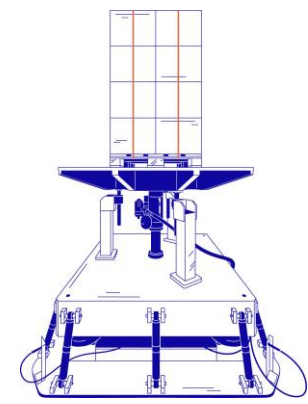
3

INCLINED IMPACT TESTER
FOR SHOCKS AND CRUSHING FORCES



4

VERTICAL VIBRATION SYSTEM
FOR VERTICAL VIBRATIONS



All-round protection

4 TESTING TOOLS

In order to investigate a wide variety of loads and their influence on the respective transport packaging, the TechCenter is equipped with four test benches: a Tilt Testing Tool for inclination tests, a Horizontal Stability Tester for horizontal accelerations or decelerations, an Inclined Impact Tester for shocks and crushing forces, and a Vertical Vibration System for vertical vibrations. In addition, there is an evaluation unit that records and evaluates deformations during the stability test with the help of a camera.

A data logger completes the TechCenter by recording and collecting the required data on shocks, vibrations and accelerations during transport. A special advantage of the data logger: We can accompany your real transport route and find out together which loads act on your product during transport, which we can then recreate on the test benches - so we adapt the packaging to your individual requirements.

EUMOS 40509, American FMCSA, ASTM International and various ISTA procedures, (ISO, ASTM, EN 15552 and various STA procedures

“With these tools, we are well equipped to enable our customers to carry out exactly the tests that are relevant to their own transport route.”

*Johannes Wieder
Sales Manager Logistics*

Link to the video:
[TechCenter](#)

Nonstop Performance.

THANK YOU